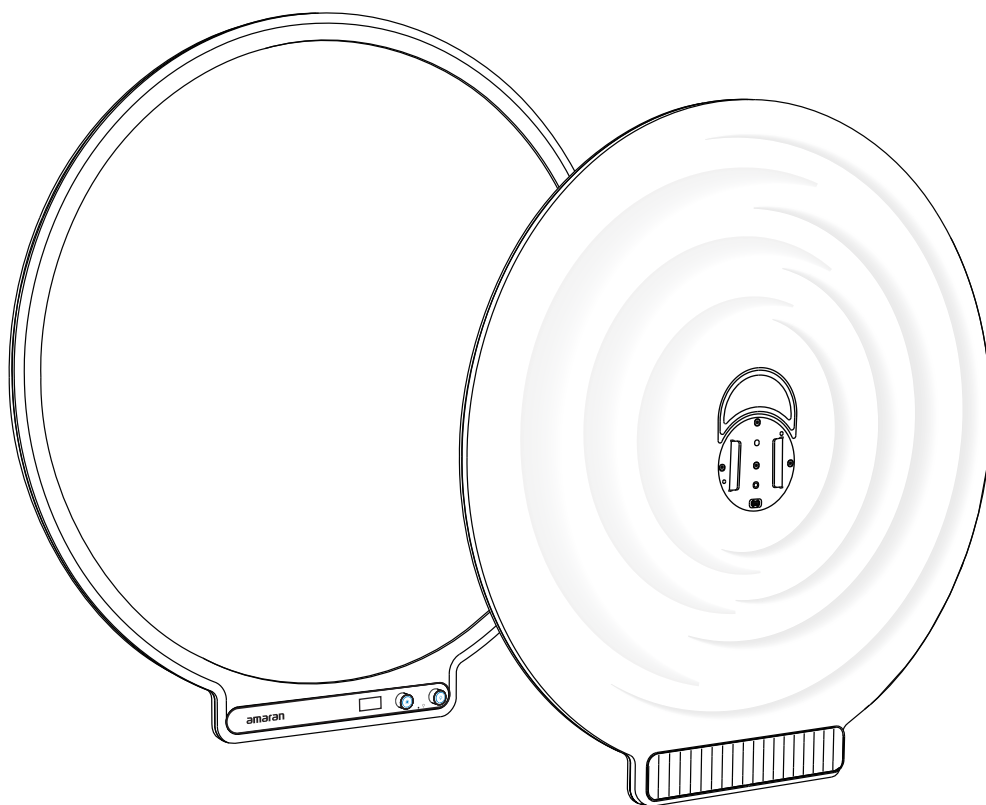


**amaran**<sup>®</sup>



# amaran Verge Max

Product Manual

English

# Table of Content

Introduction.....	03
Components List.....	04
Product Overview .....	05
Operations .....	06
1. Power Supply and Power On/Off .....	06
2. Adjusting Brightness and Color Temperature .....	07
3. Bluetooth Reset.....	07
4. FX Mode .....	08
5. Studio Mode .....	08
6. Firmware Updates.....	08
7. Light Installation .....	09
8. Light Control Grid Installation .....	12
Using the amaran App .....	14
Specifications .....	15
Photometrics .....	16
Important Safety Instructions .....	17
FCC Compliance Statement .....	18
RF Warning Statement.....	18
Disclaimer .....	19

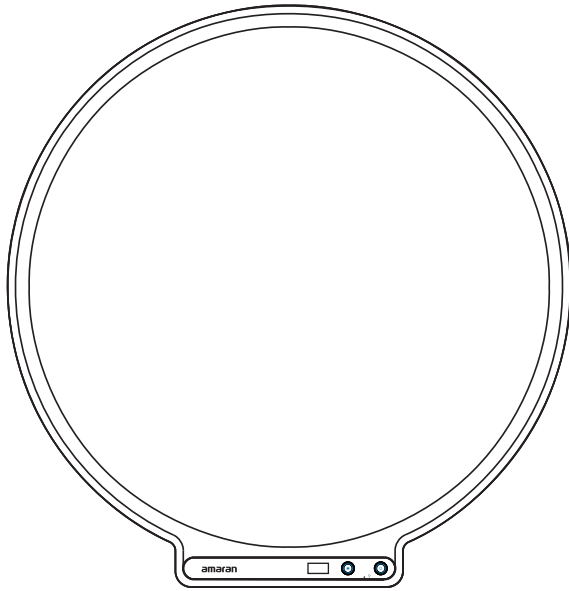
## Introduction

Thank you for purchasing the amaran Verge Max. Designed for home studio and desktop creators, the amaran Verge Max is a large, circular edge-lit LED panel delivering 60W of soft, even lighting with an adjustable color temperature range, while maintaining an ultra-thin profile. Whether you're live-streaming or recording videos, its compact and space-saving design is ideal for tight studio spaces while bringing accurate and evenly diffused lighting to match any mood or scene.

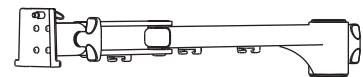
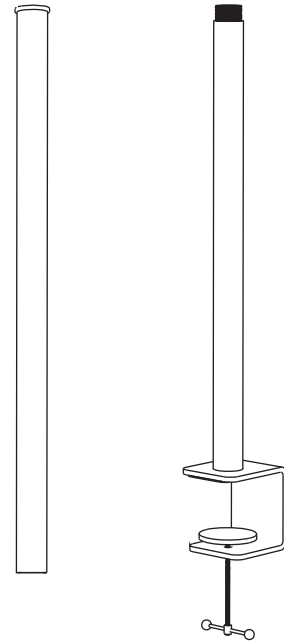
Whether controlled via the amaran desktop app, Stream Deck, or its front-facing controls, you can easily make quick brightness and color temperature adjustments without stepping out of frame. The amaran Verge Lock allows for quick and easy mounting onto your desk or a light stand, while its RG0 certification can sustain long content creation sessions without eye strain.

# Components List

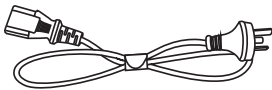
Please make sure all accessories listed below are complete before using. If not, please contact your sellers immediately.



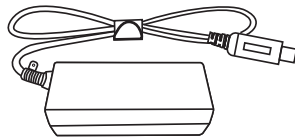
amaran Verge Max × 1



amaran Verge Lock  
Desk Clamp Stand × 1



amaran AC  
Power Cable × 1

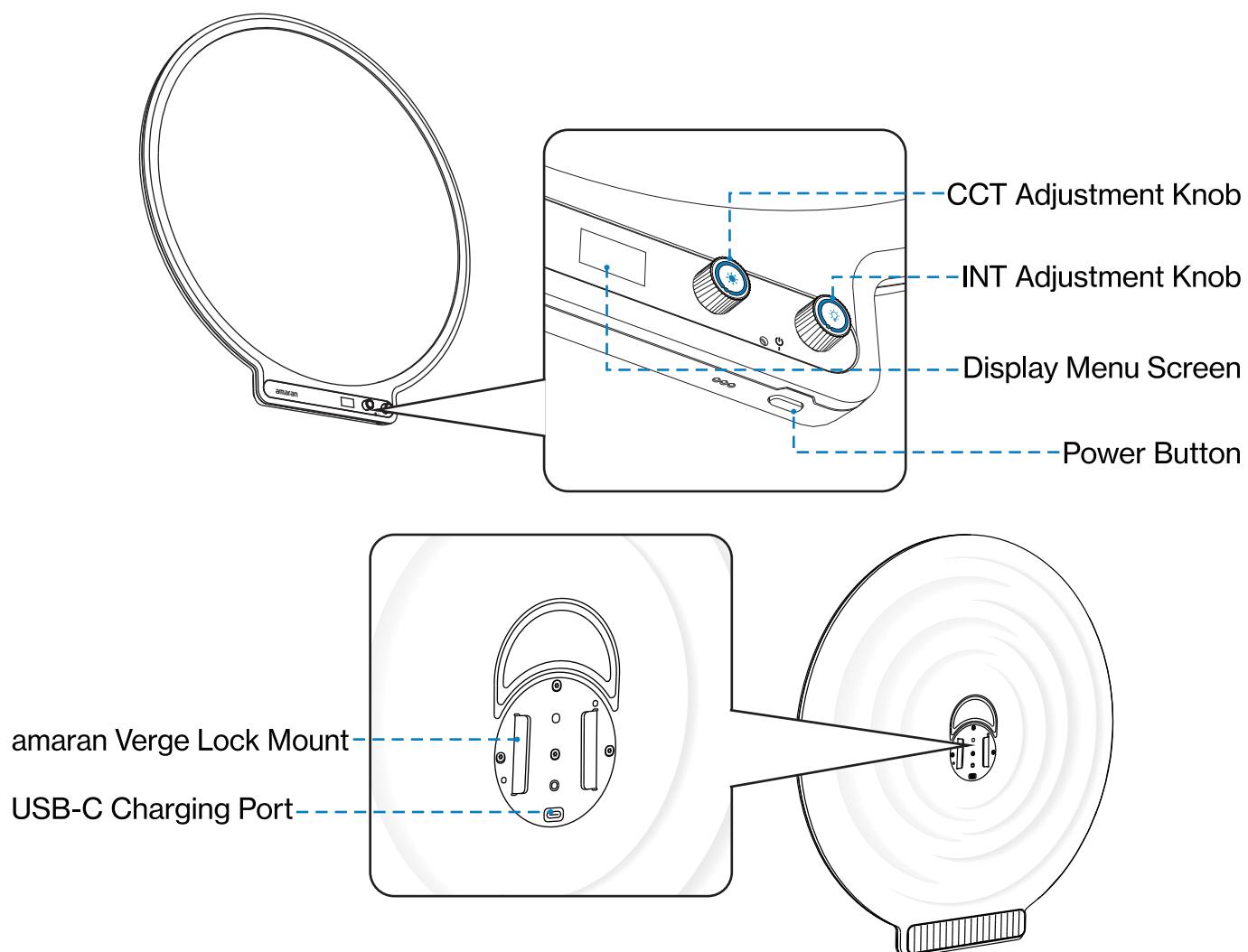


amaran 65W USB-C  
PD3.0 Power Adapter × 1

*Tip: The illustrations in the manual are diagrams for reference only. Due to the continuous development of new versions of the product, if there are any differences between the product and the user manual diagrams, please refer to the product itself.*



## Product Overview

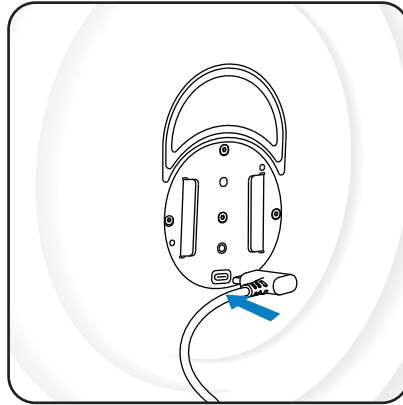


<b>Power Button</b>	Press to turn the light on/off. Hold 2s to reset Bluetooth. Double click to toggle Studio Mode on/off.
<b>INT Adjustment Knob</b>	Rotate to adjust the light's brightness.
<b>CCT Adjustment Knob</b>	Rotate to adjust the light's color temperature.
<b>Display Menu Screen</b>	Displays the light's brightness and color temperature settings.
<b>amaran Verge Lock Mount</b>	Mount the light with amaran Verge Lock compatible accessories.
<b>USB-C Charging Port</b>	Used to charge the fixture via a PD3.0-supported power supply.

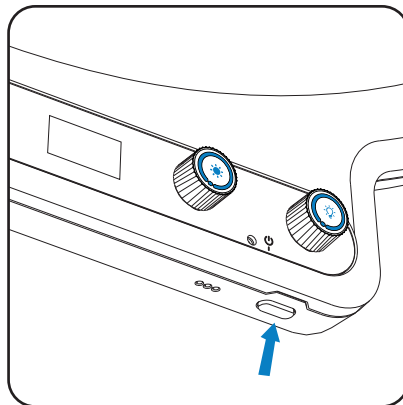
# Operations

## 1. Power Supply and Power On/Off

1. Use the included amaran USB-C PD3.0 Power Adapter to supply power to the light. Plug the end of the Power Adapter into the USB-C Charging Port, located on the back of the light. The indicator light will automatically light up after plugging in.



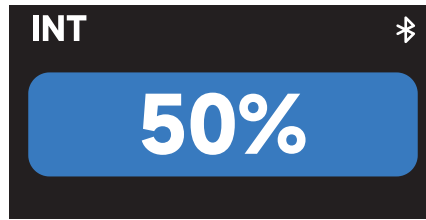
2. After connecting to the power supply, press the power button on the bottom of the fixture to turn the light on. The light will resume to its previous settings prior to turning off.
3. Press the power button again to turn the light off.



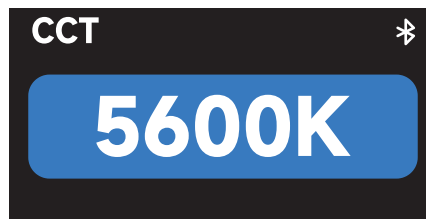
*Note: The amaran Verge Max supports power supply standards of USB-C PD3.0, but is not compatible with some third-party private charging protocols. Please ensure to select the appropriate power supply device.*

## 2. Adjusting Brightness and Color Temperature

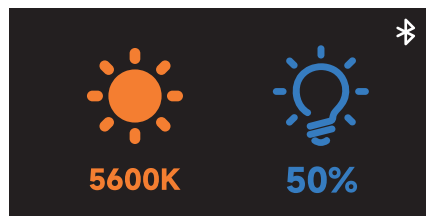
1. **INT (Intensity):** Rotate the INT adjustment knob to adjust your light's brightness from 0%-100%.



2. **CCT (Correlated Color Temperature):** Rotate the CCT adjustment knob to adjust your light's color temperature from warm white (2,700K) to cool white (6,500K).



3. The menu screen will display the light's brightness and color temperature settings.



## 3. Bluetooth Reset

Bluetooth is turned on by default.

When the light is turned on, press and hold the power button for 2 seconds to reset Bluetooth. When the pop-up window appears, continue holding the button until the progress bar is completed to finish Bluetooth reset. If you release the button before the progress bar is complete, the Bluetooth reset will be canceled.



## 4. FX Mode

FX Mode is enabled via the amaran app. The amaran Verge Max supports 7 lighting effects via the amaran app:

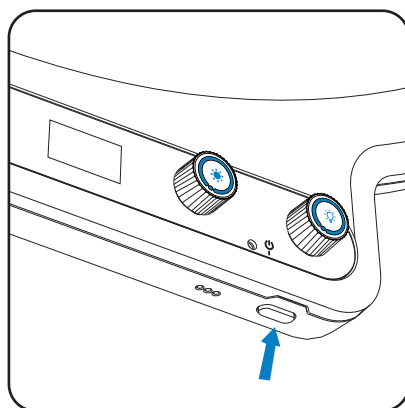
● Fireworks, Faulty Bulb, Lightning, TV, Strobe, Explosion, and Fire.

Fireworks	Faulty Bulb	Lightning	TV	Strobe	Explosion	Fire
-----------	-------------	-----------	----	--------	-----------	------

## 5. Studio Mode

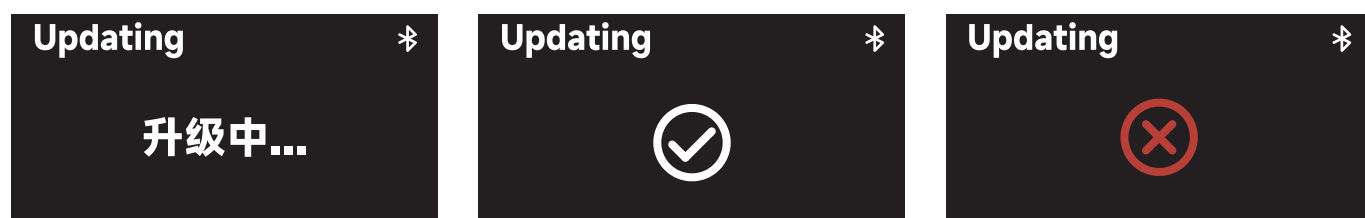
When the light is turned on, double-click the power button to toggle Studio Mode on/off. The indicator light will light up for 2 seconds then turn off.

Studio Mode is turned off by default.



## 6. Firmware Updates

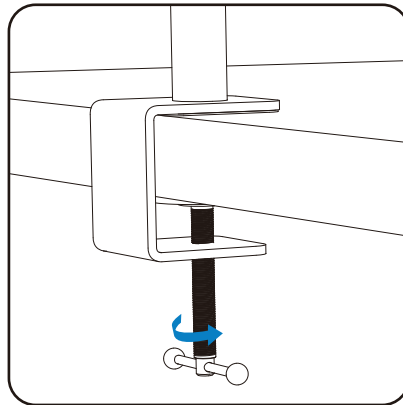
Firmware updates can be updated online via the amaran app or Sidus Link.



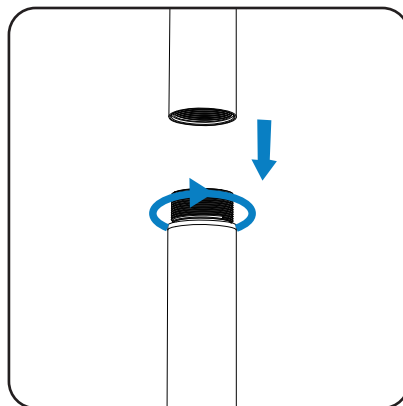
## 7. Light Installation

### Installation Method 1: Install with the amaran Verge Lock Desk Clamp Stand

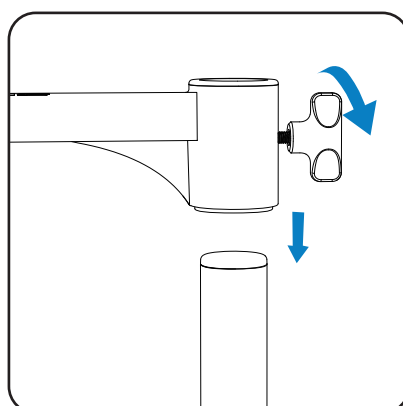
1. Before installation, please ensure that your desk or mounting surface is between 2-7cm (0.79-2.75in) thick in order for the desk clamp stand to be installed securely.
2. Clamp the base onto the desktop and rotate the locking screw to secure it.



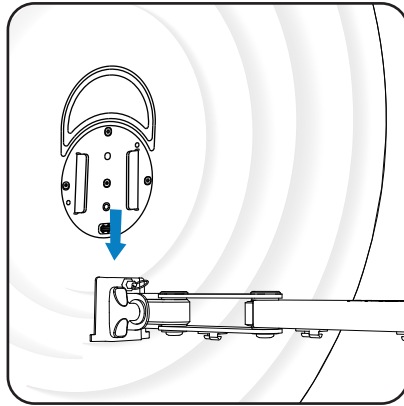
3. Connect the two columns via the screws and tighten to secure.



4. Insert the horizontal mounting arm onto the vertical column to your desired position.  
Tighten to secure. When inserting the mounting arm, please ensure the protruding side of the arm is facing downwards.

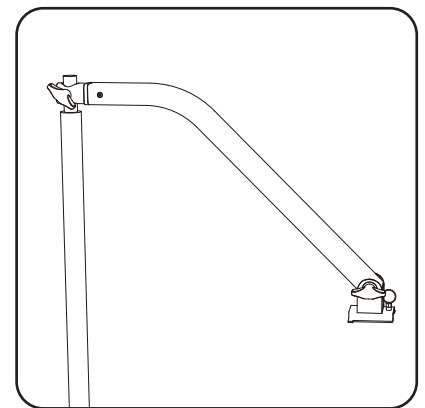
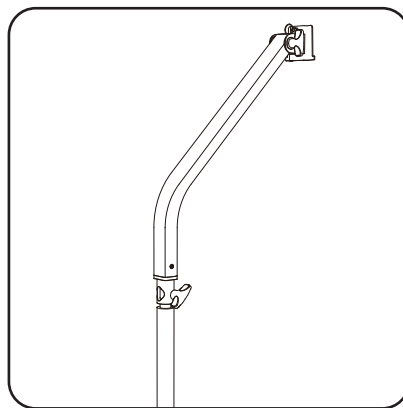
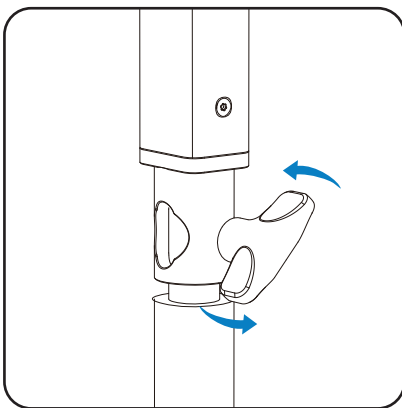


5. The desk clamp stand mounts to the back of the light via the amaran Verge Lock. Align the back of the light with the amaran Verge Lock on the mounting arm, and gently insert the amaran Verge in place. The amaran Verge Lock should automatically snap securely into place.

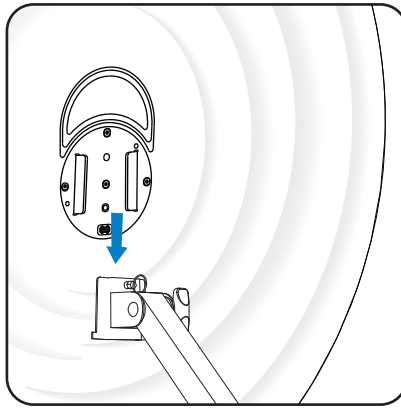


### **Installation Method 2: Install with the amaran Verge Lock Stand Adapter**

1. Insert the bottom of the amaran Verge Lock Stand Adapter onto a light stand. Insert and lock the tie down to secure. You can install the amaran Verge Lock Stand Adapter horizontally or vertically for different setups.



2. The stand adapter mounts to the back of the light via the amaran Verge Lock. Align the back of the light with the amaran Verge Lock on the stand adapter, and gently insert the amaran Verge in place. The amaran Verge Lock should automatically snap securely into place.



3. Rotate the tilting bracket knob to adjust the angle and height of the light.

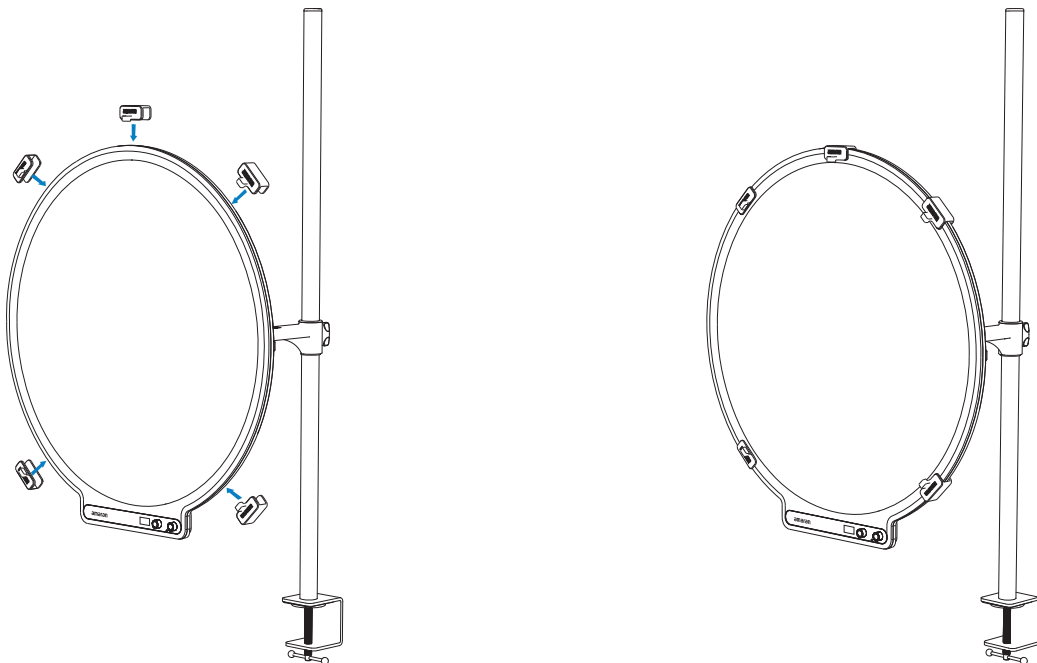
*Note: When setting up the light, please ensure that the fixture has been mounted onto a stand before connecting to power. When disassembling, please unplug the power cable first to avoid interference between the plug and light stand.*

## 8. Light Control Grid Installation

1. Before installing the grid, ensure the fixture is properly installed and secured.
2. Unfold the grid support ring. The support ring has a large elastic force, please unfold carefully to prevent injuries. Align the Velcro edges of the light control grid to the support ring as shown in the figure below.

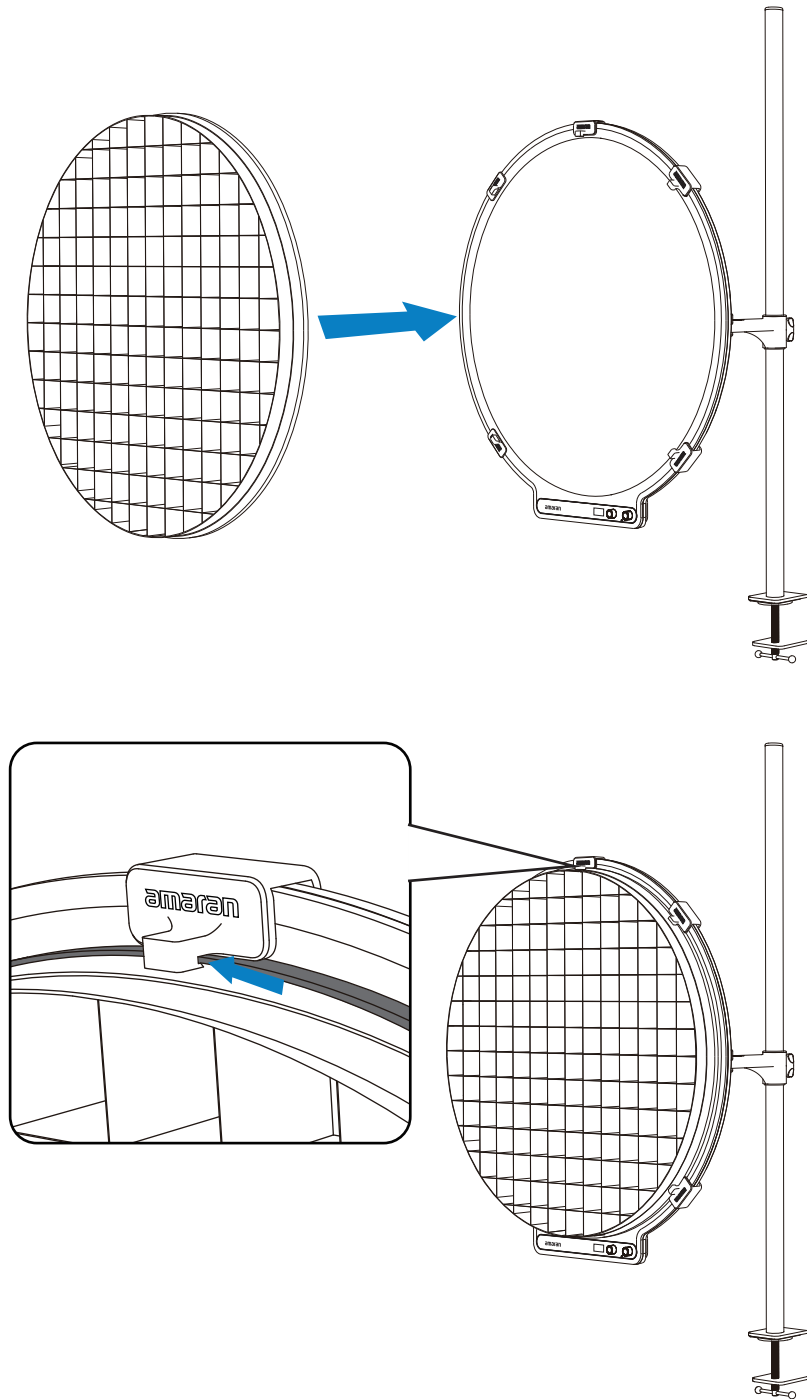


3. Securely snap on the 5 included clips evenly along the edge of the light, ensuring that the raised side of the clip with the amaran logo is facing the top of the light.





3. To secure the light control grid onto the light, place the edge of the assembled light control grid into the clip, pushing into the buckle to fasten. Repeat to secure the light control grid onto the remaining 4 clips.



## Using the amaran App

You can download the amaran App from the iOS App Store, Google Play Store, and other platforms for enhancing the functionality of the light. You can download the amaran desktop app for Mac and Windows from the amaran website. Please visit [amarancreators.com](https://amarancreators.com) for more details on how to use the app to control your amaran lights.



amaran App



[amarancreators.com](https://amarancreators.com)

## Specifications

<b>Power Input</b>	65W	<b>Power Output</b>	60W
<b>CCT</b>	2,700K - 6,500K	<b>Lumens</b>	6455lumens
<b>CRI</b>	96	<b>TLCI</b>	98
<b>TM-30 Rg</b>	102	<b>TM-30 Rf</b>	94
<b>SSI(D32)</b>	83	<b>SSI (D56)</b>	72
<b>Wireless Operating Range (Bluetooth)</b>	≤100m	<b>Power Supply Specifications</b>	PD3.0 20V
<b>Operating Temperature</b>	-10°C-40°C / 14°F-104°F	<b>Storage Temperature</b>	-20°C-80°C / -4°F-176°F
<b>Control Methods</b>	On-board, amaran App, Sidus Link	<b>Firmware Upgrade Method</b>	amaran App, Sidus Link
<b>Adapter Input Voltage</b>	AC 110-220V	<b>Length of Adapter Wire</b>	1.5m / 4.92ft
<b>Fixture Weight</b>	3.66kg / 8lb	<b>Length of AC Wire</b>	0.5m / 1.64ft
<b>Fixture Dimensions</b>	60 × 62 × 3.6 cm 23.6 × 24.4 × 1.4 in	<b>Cooling Method</b>	Passive Cooling

\* The above technical specifications are from the Aputure laboratory, and there may be some variation between individual units.

# Photometrics

CCT	Distance	Bare Light	Light Control Grid
2700K	0.5m	4920 lux	2964 lux
		457 fc	275 fc
	1m	1413 lux	1043 lux
		131 fc	97 fc
3200K	0.5m	6240 lux	3790 lux
		580 fc	352 fc
	1m	1806 lux	1340 lux
		168 fc	124 fc
4300K	0.5m	7130 lux	4330 lux
		662 fc	402 fc
	1m	2062 lux	1532 lux
		192 fc	142 fc
5600K	0.5m	6750 lux	4090 lux
		627 fc	380 fc
	1m	1955 lux	1450 lux
		182 fc	135 fc
6500K	0.5m	5900 lux	3580 lux
		548 fc	333 fc
	1m	1707 lux	1266 lux
		159 fc	118 fc

\* The above illuminance data is from the Aputure laboratory, and there may be some variation between individual units.

# Important Safety Instructions

When using the amaran Verge Max, basic safety precautions should always be followed, including the following:

1. Read and understand all instructions before using.
2. Please have the product checked by an authorized service personnel agent if the product has a problem. Any malfunctions caused by unauthorized disassembly are not covered by the warranty. The user may pay for maintenance.
3. Please do not place the fixture in high temperature environments for long periods of time, as it will accelerate the aging of the product or cause distortion to the panel.
4. Close supervision is necessary when any fixture is used by or near children. Do not leave the fixture unattended while in use.
5. Do not operate the fixture if a cord is damaged, or if the fixture has been dropped or damaged, until it has been examined by qualified service personnel.
6. This fixture is not waterproof. Please do not use the light fixture in wet conditions on account of electric shock may be caused.
7. When using the fixture for long periods of time in high temperature environments above 40°C / 104°F, care must be taken as burns can occur from touching hot surfaces.
8. Please do not place the unit near any flammable object.
9. Avoid rotating the light and ensure that the control knobs are at the bottom to prevent damage or the fixture from falling accidentally.
10. We recommend only using the original amaran Power Adapter. Please note that any malfunctions caused by using unauthorized accessories are not covered by the warranty. The user may pay for maintenance.
11. This product is certified by ROHS inspection report. Please operate the product in full compliance with relevant country's standards. Any malfunctions caused by incorrect use are not covered by warranty. The user may pay for maintenance.
12. The instructions and information in this manual are based on thorough, controlled company testing procedures. Further notice will not be given if the design or specifications change.

## FCC Compliance Statement

### WARNING

Changes or modifications not expressly approved by the party responsible for compliance could void the user's authority to operate the equipment.

### NOTICE

This equipment has been tested and found to comply with the limits for a Class B digital device, pursuant to Part 15 of the FCC Rules. These limits are designed to provide reasonable protection against harmful interference in a residential installation. This equipment generates, uses, and can radiate radio frequency energy and, if not installed and used in accordance with the instructions, may cause harmful interference to radio communications. However, there is no guarantee that interference will not occur in a particular installation.

If this equipment does cause harmful interference to radio or television reception, which can be determined by turning the equipment off and on, the user is encouraged to try reorient or relocate the receiving antenna.

- Increase the separation between the equipment and receiver.
- Connect the equipment to an outlet on a different circuit than the receiver is connected to.
- Consult the dealer or an experienced radio/TV technician for help.

## RF Warning Statement

This device has been evaluated to meet general RF exposure requirements.

## **Disclaimer**

Before using this product, please read the product manual to ensure correct use under the complete understanding. After reading, please keep the product manual properly for future reference. In case of not operating this product correctly, it may seriously harm yourself or others, or result in product damage and property loss. When using this product, it shall be deemed that you have understood, recognized and accepted all clauses and contents of this document. The user commits to be responsible for their own behaviors and all consequences thereof. amaran shall not be liable for any loss due to the user who does not use this product in accordance with the product manual.

Under the laws and regulations, our company holds the final explanation right of this document and all related documents of this product. No prior notice will be given for any update, revision or termination. Please visit the official amaran website for the latest product information.